



October 4, 2006

Dear DE Reader:

A while back, a bunch of folks from MSC briefed me on all sorts of stuff coming down the road. I have to pause and thank Bob Thomas for organizing this. Bob is one of the best communications consultants in the business. He deserves a raise, MSC.

Anyway, one of the items on the agenda was SimXpert. This is the open-the-gates component in the MSC SimEnterprise product suite. You'll find a link to a write-up on SimEnterprise in today's Pick of the Week but, suffice it to say, SimEnterprise creates the MSC vision of the engineering enterprise environment of the 21st Century. You know, all that neat stuff like seamlessly integrated multi-CAE, disbursed workgroups, value chain, etc. Think of it as an innovation enabler on steroids.



Lockwood, Editorial Director

Now, SimXpert is for you expert analysts out there and those people with whom—note the proper grammar—you work. SimXpert lets you bring together multidisciplinary CAE to solve something big. The cool part is that its Template Studio enables you to build applications—templates—out of that expert analyst's CAE simulation process knowledge. You can then push down the template onto less-expert engineers and push your analysis expert up to her or his limit.

SimXpert is cool stuff. It, and the SimEnterprise Suite, is how you must work to compete globally. Check it out through the links below.

Thanks, Pal. — Lockwood

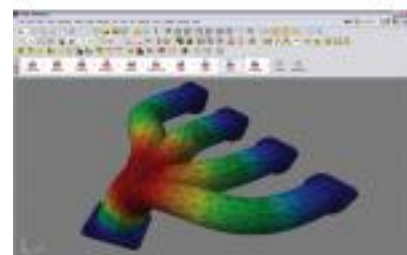
Multi-CAE Environment Fosters Knowledge Re-Use

MSC's SimXpert enables analysts to template best practices.

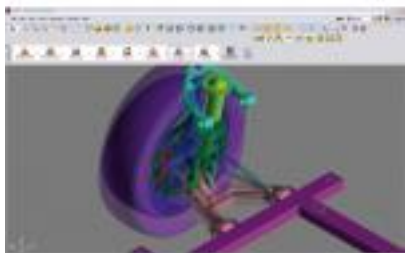
[MSC Software](#) (Santa Ana, CA) recently announced SimXpert. SimXpert, says MSC, can accelerate the speed and accuracy of multi-disciplinary simulation, automate simulation processes and tasks, capture knowledge, and improve your analysis process and, by extension, your company's innovation abilities and business productivity.

Designed for the expert engineering analyst, SimXpert enables companies to build, share, and execute best practices for simulation standardization throughout the enterprise. A key functionality of SimXpert is that it enables your top analysts to capture their

simulation process knowledge. This knowledge can then be wrapped into templates where it can be re-used by less-expert analysts or engineers repeatedly as needed. Further, SimXpert enables your top analysts with multi-disciplinary simulation capabilities including structures, motion, thermal, and crash analysis. All of which can also be captured and formed into templates for knowledge reuse by less-expert engineering staffs.



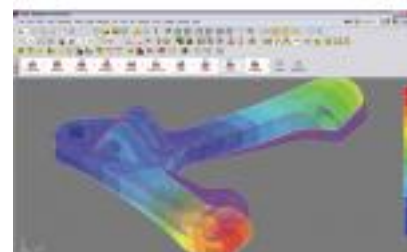
SimXpert from MSC.Software.
Click to enlarge.



SimXpert from MSC.Software.
Click to enlarge.

SimXpert is a component of MSC's recently announced SimEnterprise product suite ([click here to go to MSC for more on SimEnterprise](#)). SimEnterprise enables open connectivity between designers, analysts, and other simulation stakeholders for collaborative simulation. It has an integrated solver and pre/postprocessing environment, including MSC's MD Nastran. Other features include a multi-discipline common data model and native CAD interoperability, which eliminate the need for data translation

SimXpert's Template Studio is what enables expert analysts to author simulation best practices and standards as well as capture simulation knowledge and perform quick task automation. Once created, SimTemplates can be managed by MSC's SimManager ([click here for DE's write-up](#)) as well as shared with a variety of users, such as design engineers, via MSC's SimDesigner, the company's CAD-embedded simulation suite that enables design engineers and engineering teams to execute simulation studies earlier in the design process.



SimXpert from MSC.Software.
Click to enlarge.

The SimXpert multi-disciplinary CAE environment is now available to organizations participating in MSC.Software's Empower Program. The Empower Program enables companies to familiarize themselves on using MSC's enterprise simulation solutions prior to general availability, which, in the case of SimXpert, will follow shortly.

For more information about SimXpert and MSC. SimEnterprise solution, go to MSC.Software by clicking [here](#).