

EMV 2008r1 Release Content



Overview

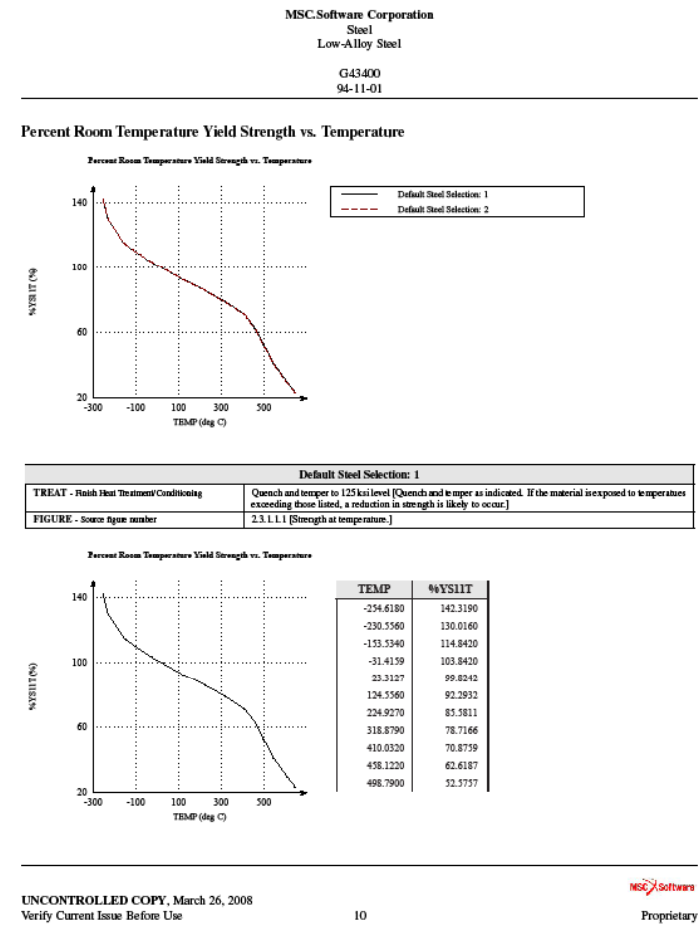
- **The MSC.Enterprise Mvision 2008r1 focuses on significant improvements in:**
 - Formatted report generation
 - A new “Power User” interface
 - SSL encryption of the Integrated Client
 - Enhanced security that supports login querying to restrict user access.
- **Additional functionality supports:**
 - Stylesheet formatting of the Pedigree Frame
 - Output to XML
 - Output of multiple curves via the Integrated Client
 - Floating Png image legends
 - On/Off toggle of the Pedigree Frame
 - Ability to modify the size of Png images

Formatted Report Generator

- LaTeX Technology
- Formats
 - PDF
 - HTML
 - Original HTML Retained
 - XML
- Features
 - **Aesthetics**
 - Aligned columns – Common Data and Tables
 - **Displays Plots with Points - Configurable**
 - **Configurable Header and Footer**
 - Obtains Content from Database Attributes
 - Displays Company Logo
 - **Customizable Curve Legends with Default Entry**

<DATASOURCE>.properties.<PROPERT
TYTABLE>.legend = ...

demo_metals.properties.SIG11TVSEPS.
legend = My Legend \${TREAT}



Power User Interface

Efficient Screen Layout

- Pedigree Frame
- Stylesheet formatting
- Toggle On/Off

Material Properties System Groups | Databanks | Units | Data

Databank: demo_metals Units: SI-Consistent

Material View: SAMPLE DATA --- DEMONSTRATION Metals Databank (Based on Mil5-LONG FORM) Go

Display Properties Export Options: Create Text File From Selected Rows (Figure: XY Points)

Total Matching Rows = 694 / Displaying Page 1 of 70

Top Previous Next Bottom Clear Selected Rows

All	Chapter Number in Handbook	Material Type	Type of Alloy	Common Name	Material Designation/Specification	Construction/physical form
<input checked="" type="checkbox"/>	2	Steel	Low- <i>Alloy</i> Steel	Low- <i>Alloy</i> Steel	AISI 4340	All
<input checked="" type="checkbox"/>	2		Steel	<i>Alloy</i>	AISI 4340	All
<input checked="" type="checkbox"/>	2	Steel	Low- <i>Alloy</i> Steel	Low- <i>Alloy</i> Steel	AISI 4340	All
<input type="checkbox"/>	2	Steel	Low- <i>Alloy</i> Steel	Low- <i>Alloy</i> Steel	AISI 4340	All
<input type="checkbox"/>	2	Steel	Low- <i>Alloy</i> Steel	Low- <i>Alloy</i> Steel	AISI 4340	All
<input type="checkbox"/>	2	Steel	Low- <i>Alloy</i> Steel	Low- <i>Alloy</i> Steel	AISI 4340	All Products
<input type="checkbox"/>	2	Steel	Low- <i>Alloy</i> Steel	Low- <i>Alloy</i> Steel	AISI 4340	All Products
<input type="checkbox"/>	2	Steel	Low- <i>Alloy</i> Steel	Low- <i>Alloy</i> Steel	AIS	
<input type="checkbox"/>	2	Steel	Low- <i>Alloy</i> Steel	Low- <i>Alloy</i> Steel	AIS	
<input type="checkbox"/>	2	Steel	Low- <i>Alloy</i> Steel	Low- <i>Alloy</i> Steel	AISI 4340	Bar

Select "All"

"Row-picking" minimizes scrolling

Common Data

Chapter Number in Handbook: 2

Material Type: Steel

Type of Alloy: Low-*Alloy* Steel

Unified Numbering ID: G43400

Common Name: Low-*Alloy* Steel

Material Designation/Specification: AISI 4340

Construction/physical form: All

Exposure time: 18 hr.] s

Row Differences

Selection: 1

Finish Heat Treatment/Condition: Quench and temper to 1... [Quench and temper as... If the material is exposed to temperatures exceeding... , a reduction in strength to occur.]

Selection: 2

Finish Heat Treatment/Condition: Quench and temper to 1... [Quench and temper as...]

Advanced Search View Clear

Clear Queries

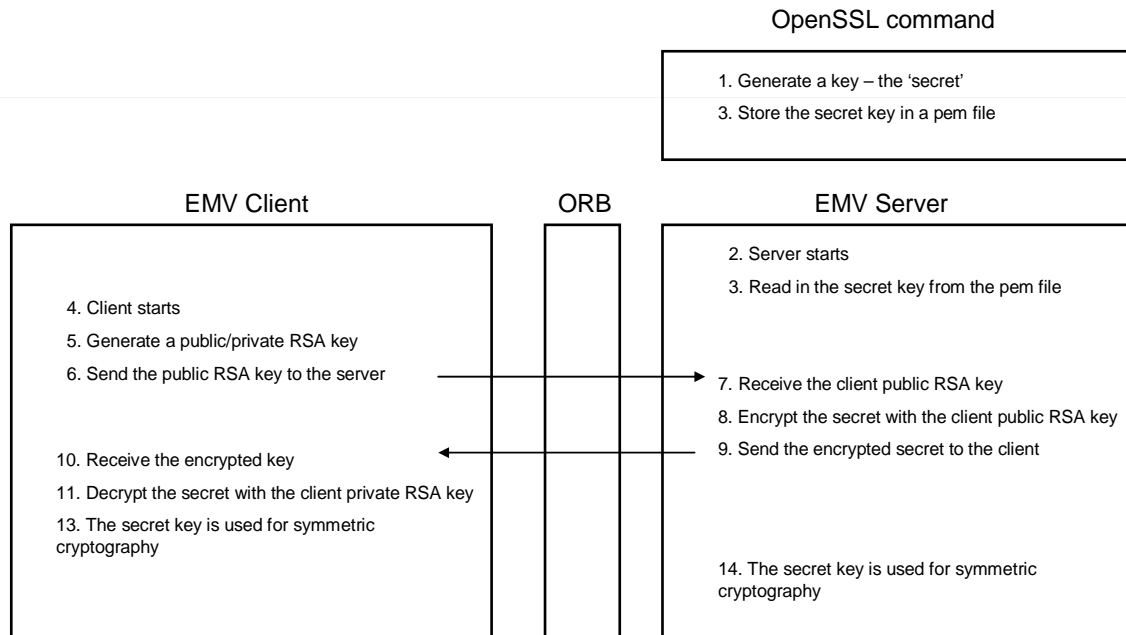
Local intranet

Additional CSS Style Elements for Customization

SSL Encryption of the IC

- Public-Private Key Encryption
- Backward Compatible with the EMV IC for Progressive Updating

One – Way Authenticating Key Transport



The ORB is used to transport the secret key to the client

Only the client whose public key was used to encrypt the secret may decrypt it with its private key

Dynamic Security Query

- **Features**

- Filters user access based on a dynamic query issued upon login for the duration of a user session
- Uses the Boolean 'AND' operator to append the security query to existing filters administered via the GroupConfiguration.txt file
 - (Security Query) AND (Engineering Query)
- Database and session specific
- Supports very long dynamic query strings
- Backward compatible to minimize disruption of existing security implementations

- **Benefits**

- Designed to facilitate the complex security restrictions required to support the global enterprise
- Dramatically reduces the overhead associated with administering user access privileges

Additional EMV 2008R1 Enhancements

- **IC Enhancements**
 - Output of Multiple Curves
 - Write Comments Wrapper
 - GetConversion Wrapper
 - Auto-pick Toggle On/Off
- **PNG Image Enhancements**
 - Ability to modify size of PNG images
 - Floating Legend Entries
- **Query String Length Extended**
- **Platforms Updated**
 - Windows XP
 - SunOS 5.8, 5.9, 10
 - Redhat Linux Enterprise 3, 4
 - HP-UX 10, 11, 11i
 - IBM AIX 5.2, 5.3

Bug Fixes

- ***ApplyQueryToPropertySets Error in Integrated Client***
- ***getConversion() Method Implemented - Correcting the null retrieval error.***
- ***Integrated Client Crash with Null Authentication -***
 - A method to prevent the IC from crashing when a user without sufficient privilege tries to open a database.
 - A warning is issued: “The database query just executed resulted in no data being selected from the database. This could be due to a combination of selection criteria that is not valid or the user may not have sufficient privileges. Click OK to continue.”
 - When the user clicks the “OK” button, it brings up the normal form with no data displayed in it.
- ***Integrated Client Auto Pick Error***
- ***Integrated Client Null Picking Error***

Thank You